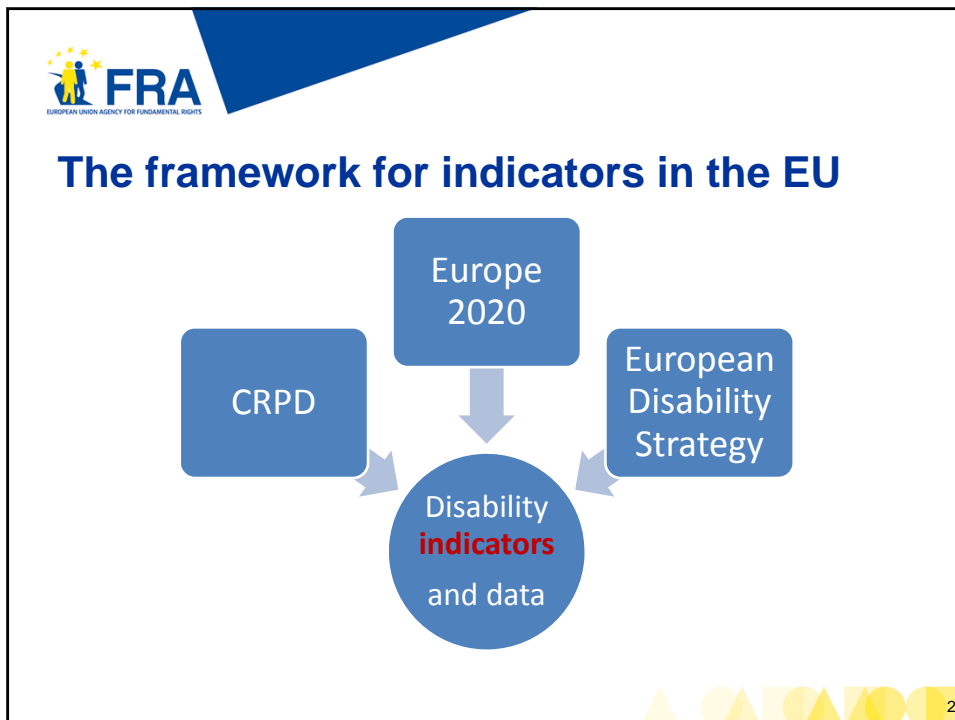


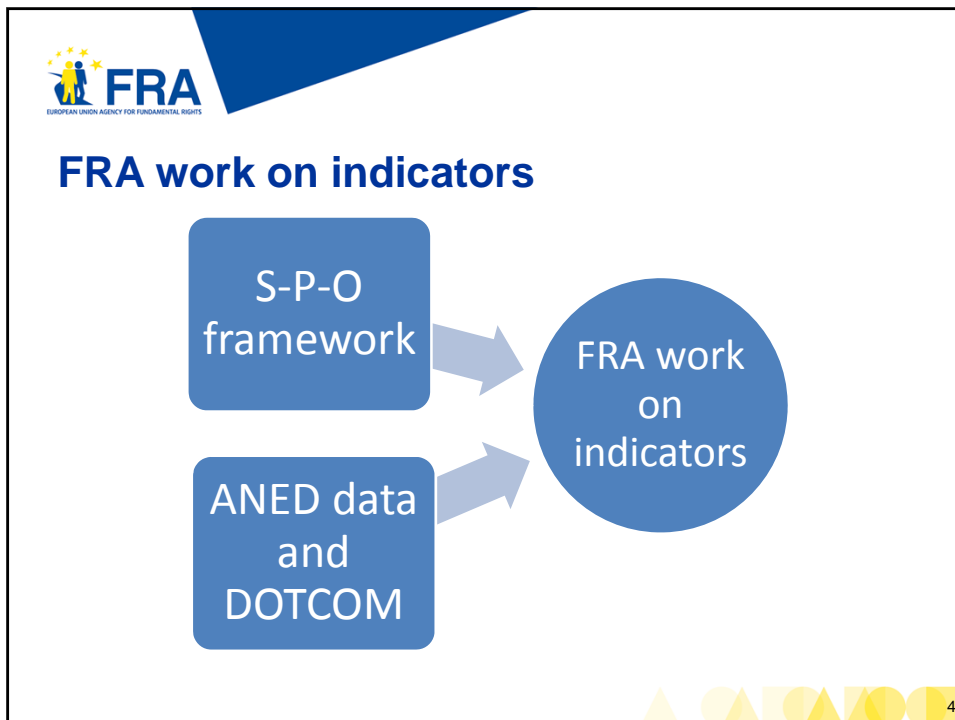
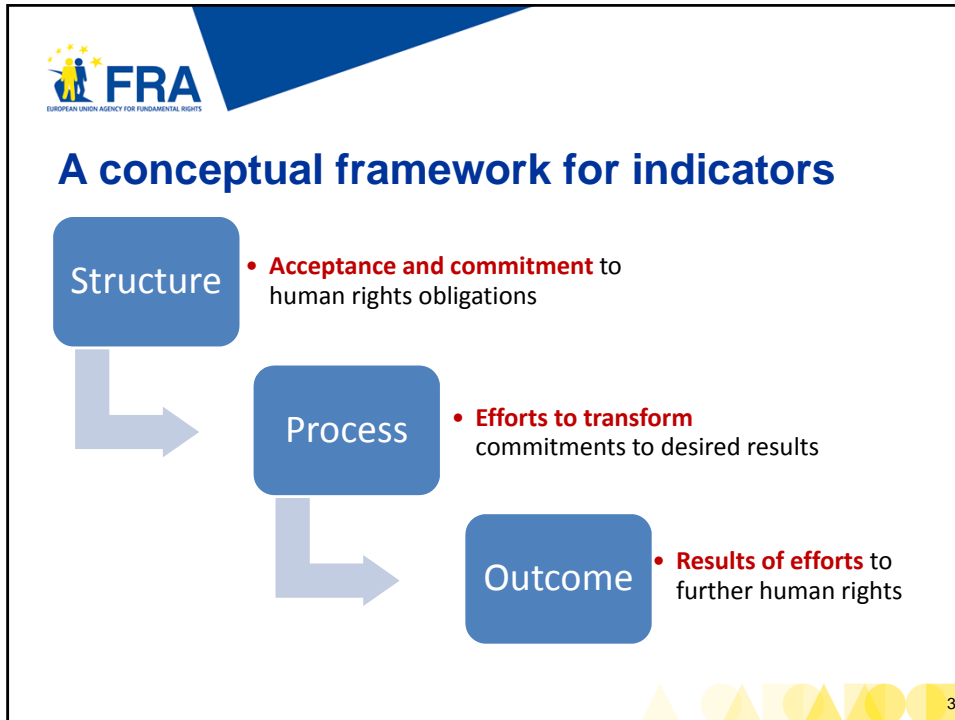



# Supporting efforts to implement the CRPD and the EU Disability Strategy

ANED Annual Meeting  
Brussels  
14 December 2012

Martha Stickings








## An example: FRA's first disability project

Structure	<ul style="list-style-type: none"> <li>• <b>Legislation</b> on right to political participation → Comparative legal analysis</li> </ul>
Process	<ul style="list-style-type: none"> <li>• <b>Policies</b> to promote / protect the right to vote → Analysis of policies and positive initiatives</li> </ul>
Outcome	<ul style="list-style-type: none"> <li>• <b>Experiences</b> of PwD and key stakeholders → Comparative social analysis (right to vote)</li> </ul>




## Data collection activities: need for a roadmap?

**and the issues of EU competence and policy priorities...**

- Consumer protection
- Accessibility
- ...
- Political participation?
- Choice and control?





**Thank you for your attention**

You can communicate with us through

**disability@fra.europa.eu**

**fra.europa.eu**

The graphic features a blue background on the right and a white background on the left, separated by a diagonal line. The bottom edge is decorated with overlapping yellow and blue geometric shapes like circles and triangles.